

## Section 1

### BASE STATION ANTENNAS

Updated 14 February 2011

#### LPY100-500 Log Periodic Yagi

**Frequency**  
100 – 500 MHz

**Bandwidth**  
FULL BAND



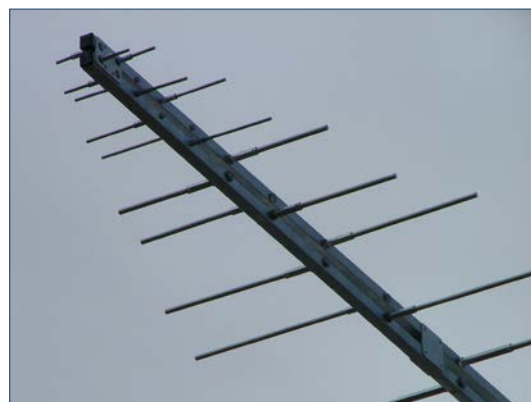
For applications requiring genuine broadband coverage across the entire frequency range 100 to 500 MHz, the LPY100-500 Log Periodic Yagi offers the the ideal solution with better than 2:1 VSWR and a consistent 7 dBi gain.

Constructed from either aluminium or stainless steel, the Yagi boom is 1.8 metres long and the longest element 1.5 metres wide.

An N-Female connector is fitted to the 200 mm RG58 stranded cable tail.

Mount the Yagi horizontal to a round mast up to 50 mm in diameter using the welded plate clamp supplied.

Coaxial feeder cable, connectors and all other accessories you may require are available to complete the installation.



SPECIFICATIONS	LPY100-500
<b>Construction</b>	Aluminium, or add the letters 'SS' for the fully stainless steel model
<b>Frequency Range</b>	100 to 500 MHz full band
<b>VSWR</b>	Less than 2:1 across the full band
<b>Tuning</b>	Factory
<b>Gain</b>	7 dBi across the full band
<b>Maximum Input Power</b>	200 Watts
<b>Nominal Impedance</b>	50 Ohms
<b>Polarisation</b>	Horizontal
<b>E-Plane</b>	43° to 75° depending upon frequency
<b>H-Plane</b>	105° to 142° depending upon frequency
<b>Front-to-Back Ratio</b>	7 dB to 15 dB depending upon frequency
<b>DC Grounding</b>	Yes
<b>Cable Tail</b>	200 mm RG58 stranded
<b>Connector</b>	N-Female fitted
<b>Boom Length</b>	1.8 metres
<b>Longest Element</b>	1.5 metres
<b>Element Diameters</b>	6 mm to 10 mm
<b>Weight in Aluminium</b>	2.7 kg including clamp
<b>Weight in S/Steel</b>	5.4 kg including clamp
<b>Projected Area</b>	0.104 m <sup>2</sup>
<b>Wind Load at 160 kph</b>	12.5 kg, 0.123 kN
<b>Mounting Bracket Supplied</b>	Welded plate clamp to suit round mast up to 50 mm in diameter
<b>Packaging</b>	In cardboard tube. The antenna requires assembly.