

## Section 6

### MARINE ANTENNAS

Updated 18 February 2011

### CM Series NEXT G or GSM Cellular Mobile Phone Mast Mount or Side Mount

Frequency  
**825 – 960 MHz**

Bandwidth  
**NEXT G or GSM**



These ground independent omnidirectional cellular mobile phone antennas may be mounted to the mast of a vessel, or they can be side mounted from a wheelhouse or any other flat vertical surface. With 8.1 dBi gain, they offer the maximum gain and reception range practical in a broadband mobile phone antenna.

The white fibreglass radome and stainless steel mount tube stands 2.4 metres tall. The antenna is matched internally by a unique transforming printed circuit board.

The N-Female connector located at the base of the mount tube is rated for up to 20 watts input power.

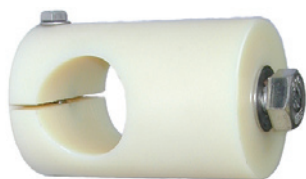
⇒ **CM1600AM** is factory tuned to cover the NEXT G network.

⇒ **CMG1600AM** is for the GSM network.

All components used are of the highest quality to ensure long term survival in the harsh marine environment. These antennas will deliver reliable performance for many years.

Mounting clamps, feeder cable, connectors, cable ties and tape are available separately to complete the installation.

SPECIFICATIONS	CM1600AM	CMG1600AM
<b>Construction</b>	Single piece white fibreglass tapered radome, transforming printed circuit board, stainless steel mount tube	
	Blue Cap	Red Cap
<b>Cellular Mobile Phone Network Coverage</b>	<b>NEXT G</b> <b>825 – 890 MHz</b>	<b>GSM</b> <b>890 – 960 MHz</b>
<b>Tuning</b>	Factory	Factory
<b>VSWR</b>	Better than 1.5:1	Better than 1.5:1
<b>Gain</b>	<b>8.1 dBi</b>	<b>8.1 dBi</b>
<b>Max Input Power</b>	20 Watts	20 Watts
<b>Impedance</b>	50 Ohms	50 Ohms
<b>DC Grounded</b>	Yes	Yes
<b>Polarisation</b>	Vertical	Vertical
<b>E-Plane</b>	13°	13°
<b>H-Plane</b>	360° Omnidirectional	360° Omnidirectional
<b>Connector</b>	N-Female located at base of mount tube	
<b>Height</b>	2.4 metres	2.4 metres
<b>Weight</b>	0.7 kg	0.7 kg
<b>Mount Tube</b>	420 mm long x 20 mm diameter	
<b>MAST Mounting Clamps (not supplied)</b>	2 x EB1SS stainless steel parallel mast clamps recommended. Suit round mast between 20 mm and 50 mm in diameter.	
<b>SIDE Mounting Clamps (not supplied)</b>	2 x NSM-B20M will suit the 20 mm mount tube	



NSM-B20M

Constructed from nylon with stainless steel bolts and washers, Nylon Side Mounts are specifically designed to mount a marine antenna to the side of a vessel's wheel house or other flat vertical structure.

Drill a 12.7 mm (½") diameter hole through the vertical surface for the stainless steel bolt. Then tighten the bolt to firmly secure the side mount in position.

Using two (2) of these nylon side mounts, the antenna mount tube is held tightly by the 8 mm stainless steel clamp bolt.



EB1SS stainless steel parallel mast clamps