

## Section 9

### ANTENNA MOUNTING ACCESSORIES

Updated 22 April 2011

### Mast Mounting Clamps Parallel 180°

– Page 1 of 2 –



ZCG Scalar manufacture a complete range of antenna mounting clamps to suit booms and masts of various diameters. All clamps we offer have undergone extensive field tests to ensure the highest quality, strength, long term durability and ease of installation. This page lists our selection of parallel clamps.



#### EB1SS

**All stainless steel components, U-bolts 13.5 cm deep**

Antenna Boom Diameters : 20 mm up to 50 mm Round

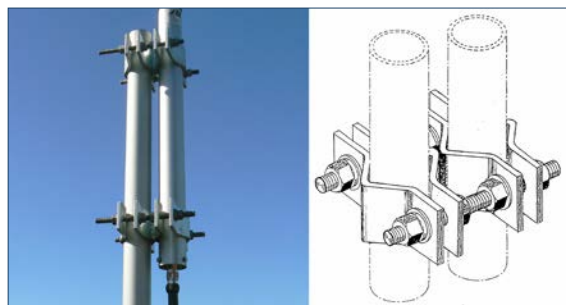
Mast Diameters : 20 mm up to 50 mm Round

Mounting Orientation : Parallel 180°

Service : Light to Medium Duty

Clamp Weight : 380 grams

*Recommended for stainless steel or aluminium antennas  
Use in pairs*



#### UAM180L

**Galvanised steel components with welded joint**

Antenna Boom Diameters : 40 mm up to 75 mm Round

Mast Diameters : 40 mm up to 75 mm Round

Mounting Orientation : Parallel 180°

Service : Heavy Duty

Clamp Weight : 1.8 kg

*Recommended for stainless steel or aluminium antennas  
Use in pairs*



#### UB3SS

**All stainless steel components, U-bolts 9 cm deep**

Antenna Boom Diameters : 20 mm up to 32 mm Round

Mast Diameters : 20 mm up to 50 mm Round

Mounting Orientation : Parallel 180°

Service : Light to Medium Duty

Clamp Weight : 450 grams

*Recommended for stainless steel or aluminium antennas  
Single clamp sufficient to mount light design antenna*



#### UAM180UNI

**Galvanised steel components joined by threaded rod**

Antenna Boom Diameters : 40 mm up to 75 mm Round

Mast Diameters : 40 mm up to 90 mm Round

Mounting Orientation : Parallel 180°

Service : Heavy Duty

Clamp Weight : 1.9 kg

*Recommended for stainless steel or aluminium antennas  
Use in pairs*

#### UAM180UNIL

**Galvanised steel components joined by threaded rod**

Antenna Boom Diameters : 40 mm to 90 mm Round

Mast Diameters : 60 mm to 115 mm Round

Mounting Orientation : Parallel 180°

Service : Heavy Duty

Clamp Weight : 2.1 kg

*Recommended for large diameter masts  
Use in pairs*

## Section 9

### ANTENNA MOUNTING ACCESSORIES

Updated 22 April 2011

### Mast Mounting Clamps Parallel 180°

– Page 2 of 2 –



### UAM180UNIL-42

**Galvanised steel components joined by 150 mm adjustable galvanised or stainless steel spacer bars**

Antenna Boom Diameters : **40 mm up to 90 mm Round**

Mast Diameters : **60 mm up to 115 mm Round**

Mounting Orientation : **Parallel 180°**

Service : **Heavy Duty**

Clamp Weight : **2.3 kg**

*Recommended for stainless steel or aluminium antennas*

*Use in pairs*